

Safe at Heights



Project: Kareenga Prison

Sector: Councils



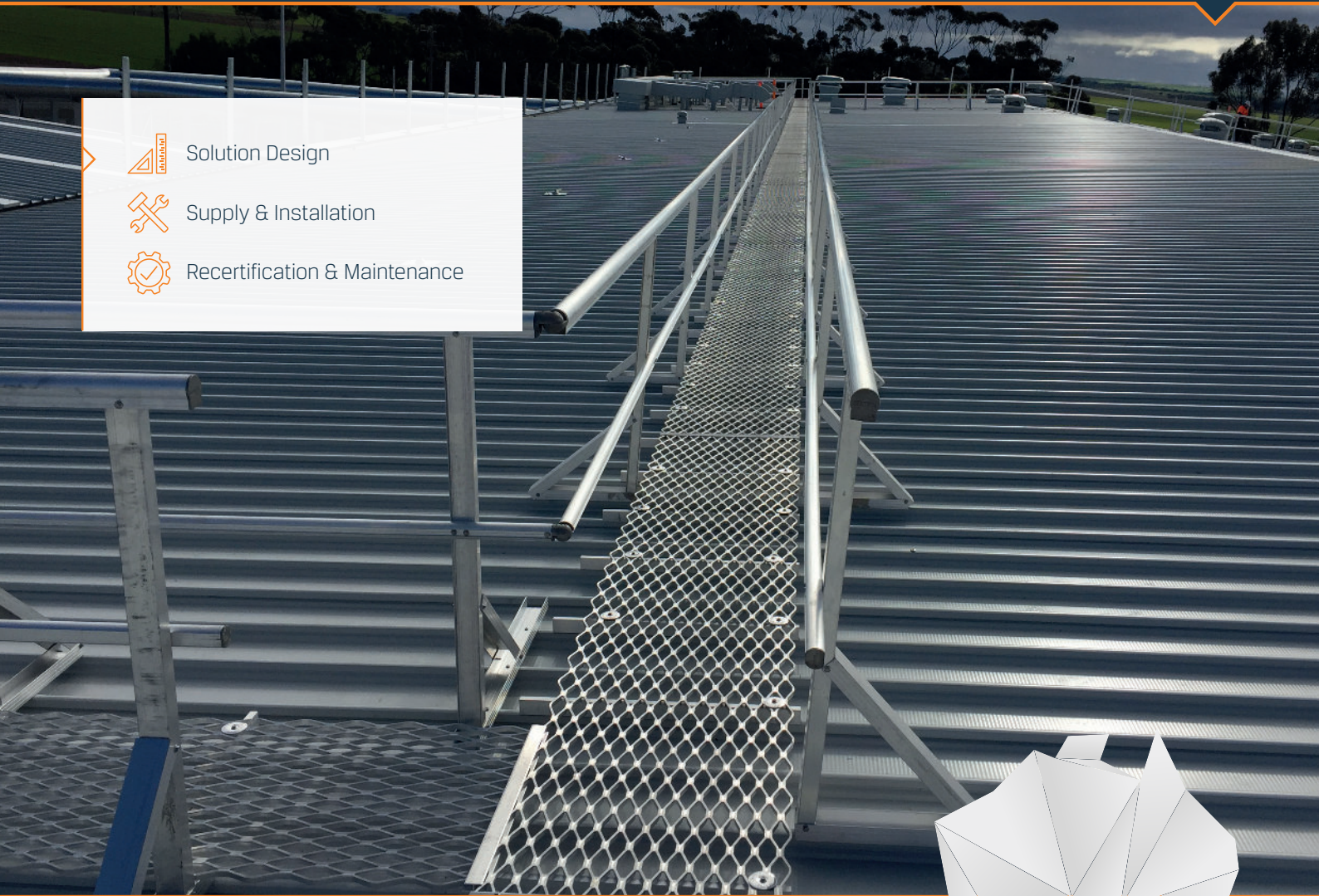
Solution Design



Supply & Installation



Recertification & Maintenance



The height of safety

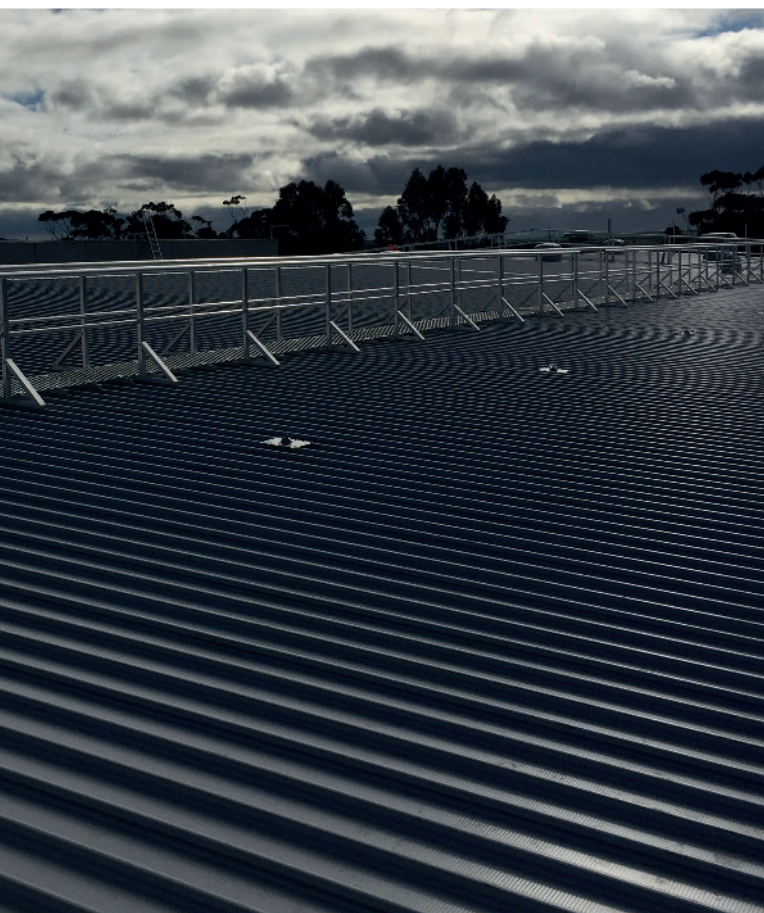
For three years, Anchor Safe has worked with Kareenga Prison, a medium security correctional centre near Melbourne, providing our quality height safety services. We were excited to have the opportunity to again partner with the prison to provide safe access and fall arrest systems for the 13 buildings at the facility.

Delivering results from top to bottom

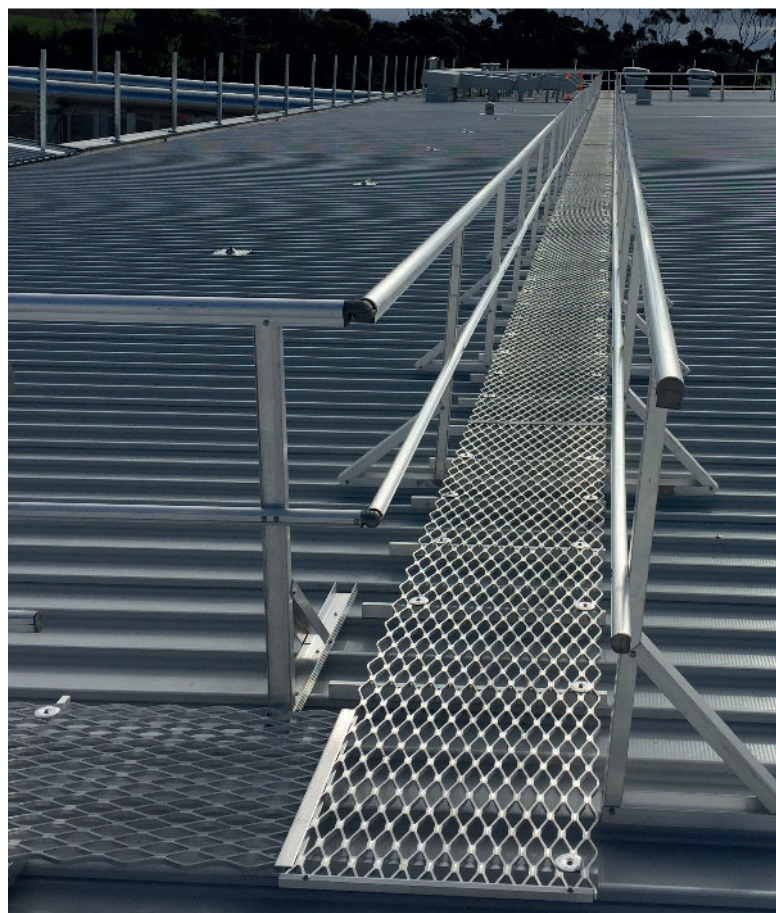
Following a thorough analysis of the facility, we prepared plans to enable safe access to the roof area, providing walkways and ladder access to plant and equipment requiring regular maintenance. Throughout the entire process, we shared plans and kept in constant contact with our clients to ensure they could make informed decisions. The result is an efficient access system across the facility, which we will maintain annually.



Walkway with double sided guardrail installed to ensure workers are safe and the roof is protected.



Anchor points in foreground for safe access to edge of roof.



Straight section of walkway & guardrail displaying the quality of workmanship our installers pride themselves in.