

GUARDRAILS, PLATFORMS & WALKWAYS

FACT SHEET



When it comes to safety, the aim is to minimise, manage and ultimately, eliminate the hazard or risk associated with a task.

Elimination of a hazard or risk is the top rung on the Hierarchy of Control and in height safety terms, that means eliminating the risk of a fall from height which could cause injury or harm or worse, a fatality.

Guardrails, platforms and walkways provide the second highest level of fall prevention, making them a must have for any commercial, industrial or residential building or site which requires people to work at height.

This Fact Sheet provides you with a user-friendly guide to controlling and preventing the risk of falls from height at your site through the installation of guardrails, platforms and walkways.



GUARDRAILS, PLATFORMS & WALKWAYS - WHY THEY WORK



Why are [guardrails, platforms and walkways](#) so effective in preventing the risk of falls from heights?



Guardrails, platforms and walkways provide permanent and controlled access for employees and contractors to undertake work on almost any elevated surface.



Guardrails, platforms and walkways are designed to provide stability and grip, allowing workers to carry out repairs and maintenance with confidence.



Platforms help minimise the risk of falling objects because they allow a worker to place any tools or equipment down in a secure spot on the platform.



Roof access walkways and platforms protect roof sheets and membranes from damage in high traffic areas, preventing falls as well as leaks



Roof access walkways and platforms provide a safe method of access over skylights. Plus, they increase the efficiency of accessing a rooftop or elevated work area.

The presence of guardrails, walkways and platforms can remove or reduce the need for fall arrest Personal Protective Equipment (PPE) or a harness to be worn.

FACT

Between 2007 and 2016 there were 42 fatalities from either a fall from height or being hit by a falling object

BUILT FOR SAFETY

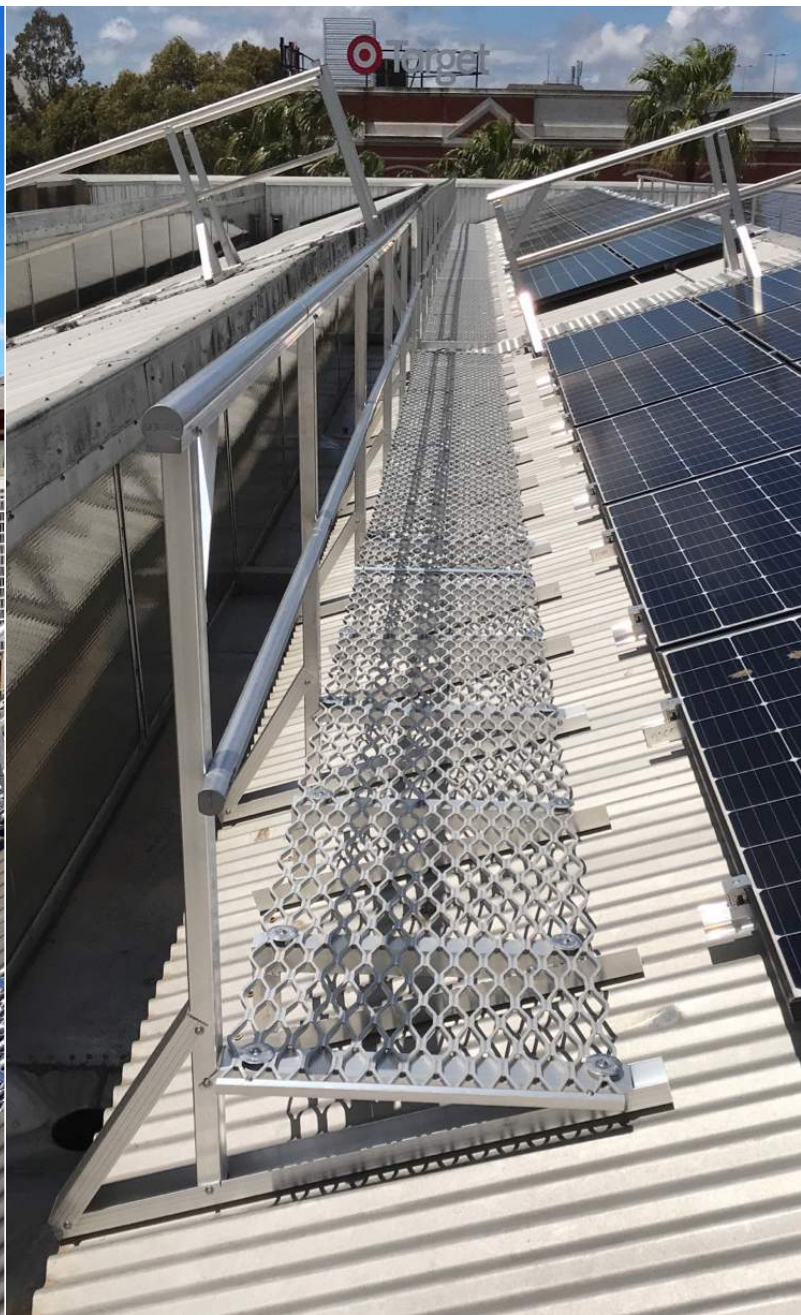
GUARDRAILS & WALKWAYS



Guardrails & Walkways

Guardrails and walkways are designed to keep workers safe at height and stop anyone from falling over an edge. Guardrails provide an effective barrier around elevated surfaces, while walkways offer a sturdy path with a non-slip surface.

Rooftop walkways provide access to otherwise unreachable areas on rooftops and keep workers off any fragile or brittle roof areas, preventing falls through roofs. They can also be used to create a safe, suspended walkway above or between machinery, silos and other elevated equipment or structures.



BUILT FOR SAFETY PLATFORMS



Platforms

Platforms are designed to provide stability and grip, allowing workers to carry out repairs and maintenance, at height, with confidence.

Plant Platforms are ideal for rooftop areas which require regular inspections and maintenance and are commonly used to facilitate safe access to equipment that is elevated or situated on rooftops. This reduces the weight loads on roofs, allowing heavy objects such as air-conditioning to be housed without causing any damage to the surface of the roof.



Get the right solution for your site

- Not all sites are the same. Guardrails, platforms and walkways should be customised to suit:
 - access requirements
 - physical characteristics of the roof, building or structure, such as a roof's pitch or profile, and
 - environmental considerations, such as weather.
- Guardrails, platforms and walkways must comply with AS/NZ Standards relating to working at heights and fall prevention.
- If the pitch of a roof exceeds 7 degrees, walkways must be levelled in accordance with AS 1657.
- Guardrails, platforms and walkways should be manufactured using high quality, non-corrosive, non-sparking and non-conductive materials. Anchor Safe recommends aluminium walkways or Fibre Reinforced Polyester (FRP) Walkways, fabricated to the highest standards with advanced, multi-direction non-slip surfaces. Our guardrails and platforms are manufactured using high quality aluminium.
- Platforms and walkways must be built to withstand heavy loads.



AESTHETICS



Aesthetics

- Guardrails and walkway systems can be painted or powder coated to blend in and match a building or structure.
- Foldable guardrail systems can be installed where a fixed guardrail may take away from architectural features or otherwise interfere with a building.



Work with a qualified, professional installers

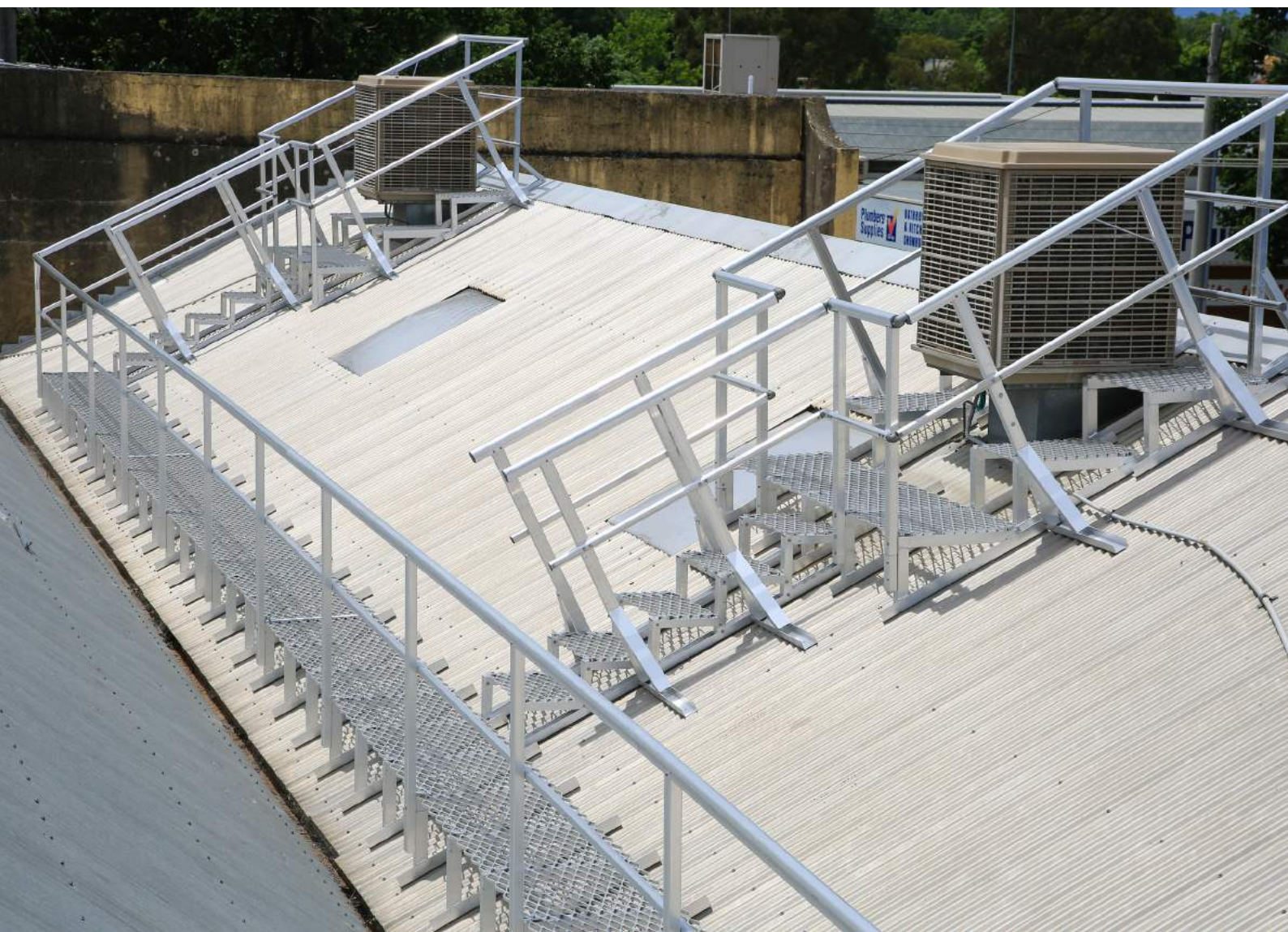
- Competency is key when you are dealing with life-saving equipment.
- Choose a qualified, accredited installer with height safety experience to ensure the installation of guardrails, platforms and walkways meets all of the relevant standards and regulations.
- A quality installation ensures the fall protection system is secure, robust and will stand the test of time.
- A qualified installer will know how to ensure the guardrails, platforms and walkways are installed using fixtures (e.g. self-sealing-bulb fixing rivets) to eliminate the risk roof leaks.



Know your compliance requirements

Anchor Safe can provide expert advice and support regarding your height safety compliance requirements. However, here are the key standards, codes and regulations you need to know about:

- Work Health and Safety Act 2011.
- Check the relevant working at heights legislation in your State or Territory.
- Standard AS 1657:2018 – Fixed platforms, walkways, stairways and ladders – Design, construction and installation.
- Safe Work Australia [Model Code of Practice: Managing the risk of falls at workplaces](#) (Published 26 October 2018).
- Working at Heights Association Industry Code – Walkway, Guardrail, Platforms and Permanent Ladders.



EXPERT TIP

"In my opinion removing the risk of falls altogether is the best solution to saving lives in the workplace. I've been installing platforms and guardrail for 4 years now, time and time again I see the benefits such as easier access, reduced risk of falling and a reduction in dropped items"

Zack Deanshaw- Anchor Safe Installer



REFERENCES

Safe Work Australia – Working at Heights <https://www.safeworkaustralia.gov.au/heights>

Safe Work NSW – Working at Heights - <https://www.safework.nsw.gov.au/hazards-a-z/working-at-heights>

Working at Heights Association – Platforms, Guardrails, Handrails & Permanent Ladders - <https://www.safework.nsw.gov.au/hazards-a-z/working-at-heights>